



PRBO Sierra Nevada Avian Monitoring Information Network

<http://data.prbo.org/apps/snamin/>

L. Jay Roberts – lroberts@prbo.org, Ryan D. Burnett – rburnett@prbo.org, Thomas Fonseca – tfonseca@prbo.org



What is it?

- **SNAMIN** is an online data exploration and analysis tool designed to provide ecological feedback to help inform decisions in an adaptive management framework.
- Each project page contains background information and descriptions of sample design and field methods.
- **SNAMIN “nodes”** cover a variety of avian monitoring projects targeted towards informing management at the bioregional scale, on specialized habitats including aspen and meadows, and in locations receiving management treatments (e.g. fuels reduction and post-fire habitats).



How does it work?

- Field survey data from each of these projects is uploaded and available for analyses within 2 months following each field season.
- Survey locations can be downloaded in multiple formats and viewed in online interactive maps.
- Data are accessible through downloads and analyses including: effort, density, occupancy, and richness.
- Reports and publications are available for download from each project.

Avian Bioregional Monitoring in Forest, Chaparral, and Riparian Habitat

Years: 2009 – ongoing
samples: 2900 points on 600 transects
Locations: Modoc, Lassen, Plumas, Tahoe, LTBMU, Eldorado, Stanislaus, Sierra, and Sequoia National Forests

Avian Monitoring in Aspen Habitat

Years: 2000 – ongoing
samples: 735 points on 62 transects
Locations: Lassen and Inyo National Forests

Avian Monitoring in Fuels Treatments

Years: 2000 – ongoing
samples: 2205 points on 202 transects
Locations: Plumas and Lassen National Forests

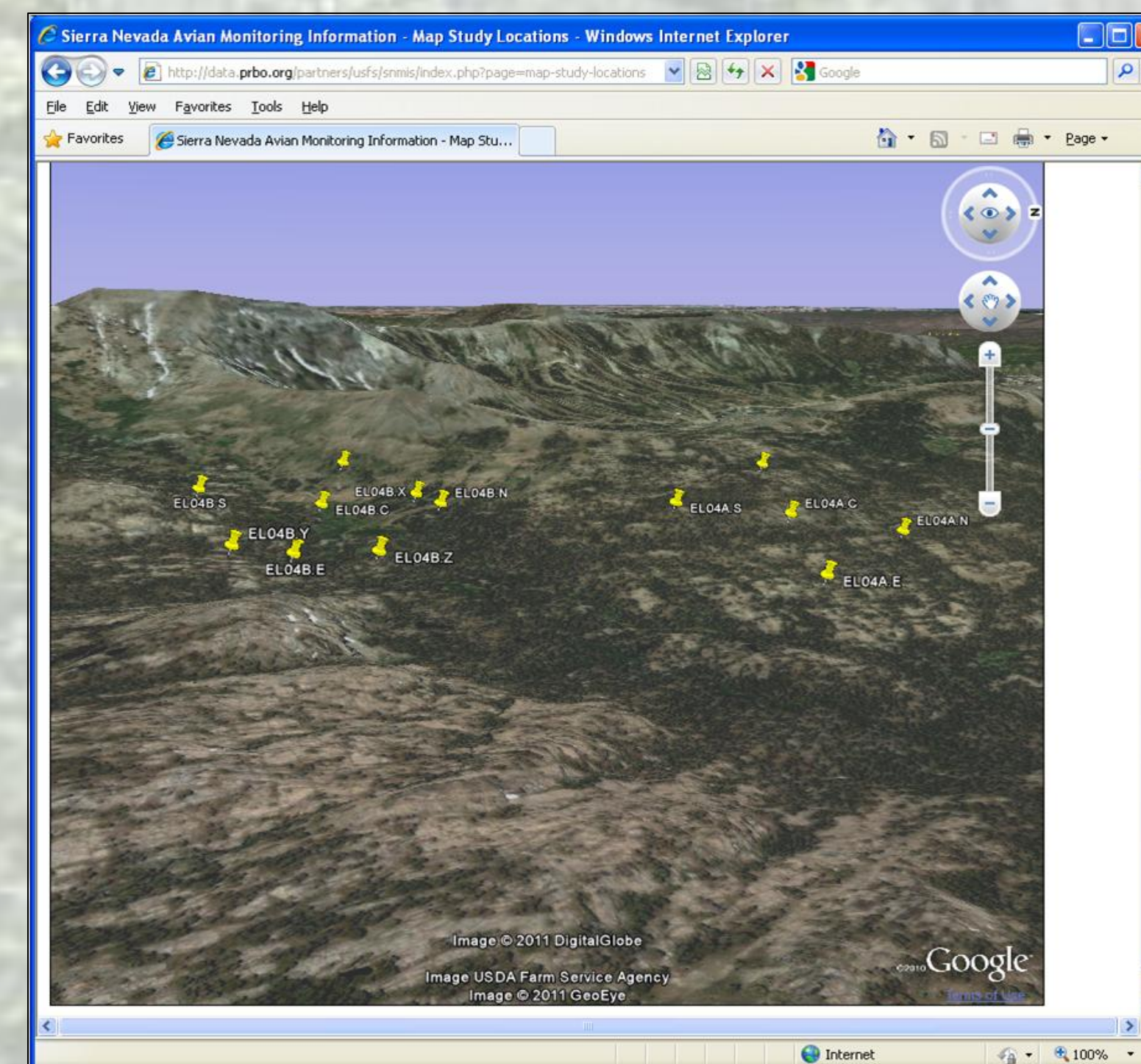
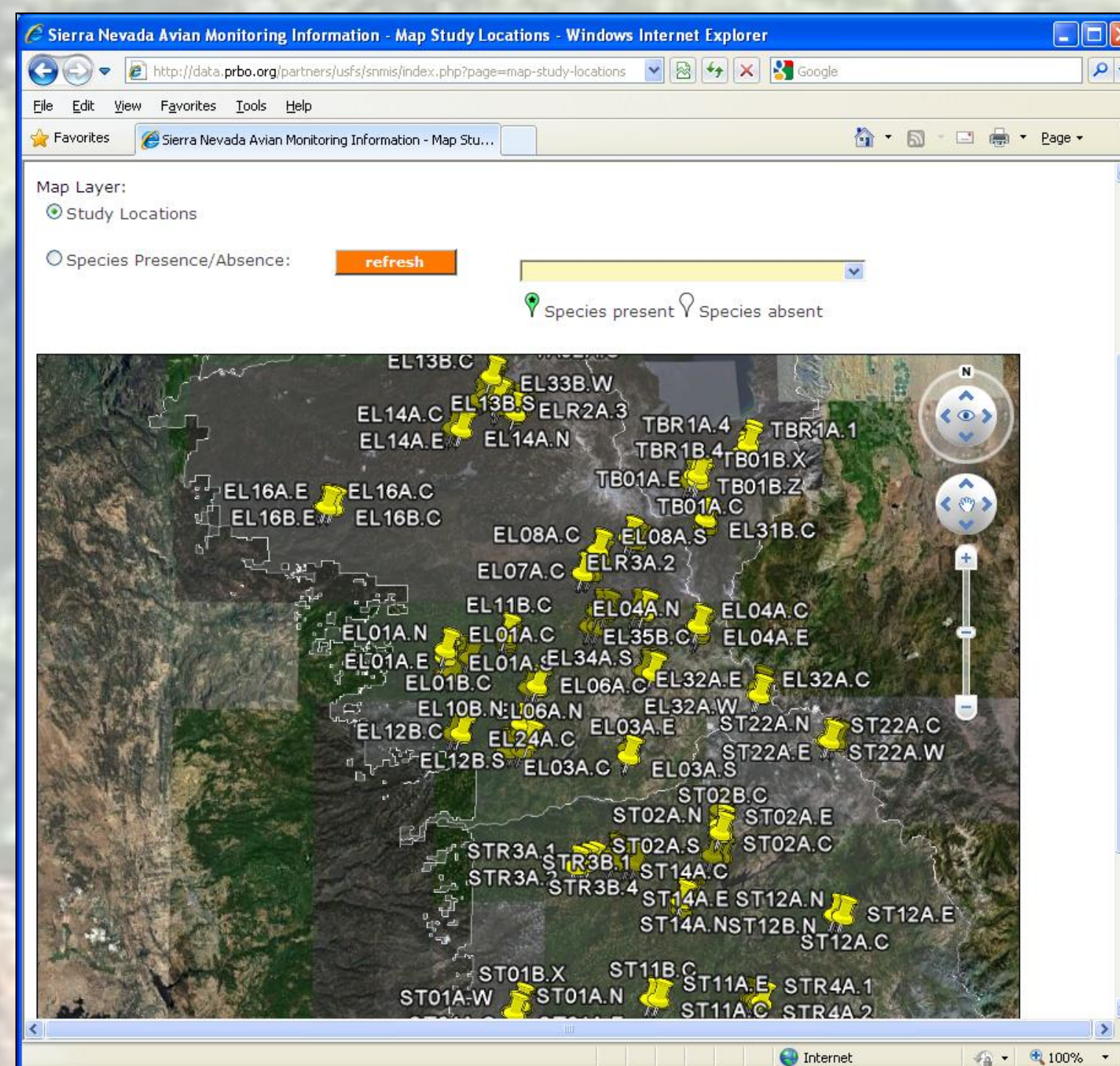
Avian Monitoring in Post –fire Habitats

Years: 2009 – ongoing
samples: 315 points on 62 transects
Locations: Plumas and Lassen National Forests

Avian Monitoring in Mountain Meadows

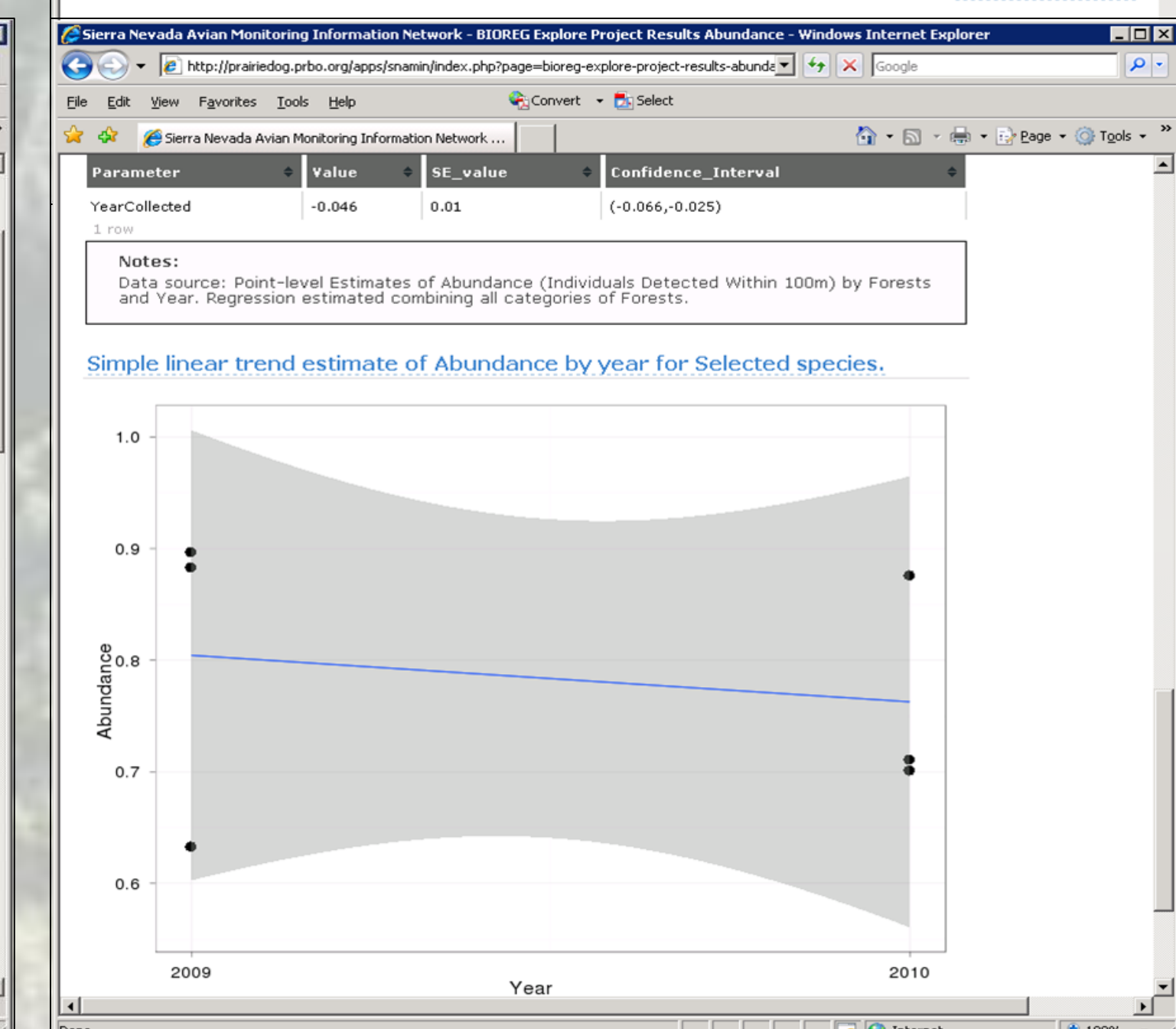
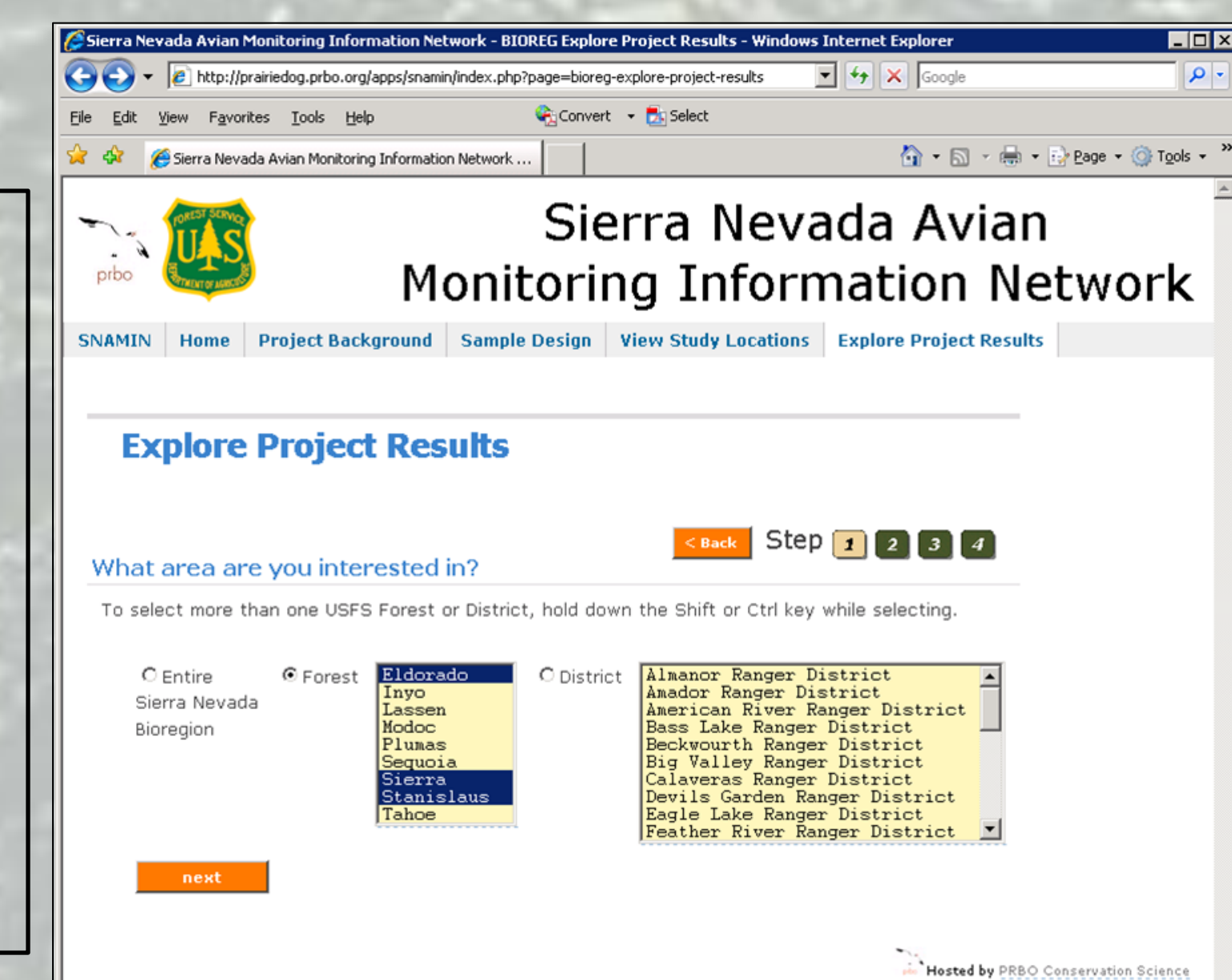
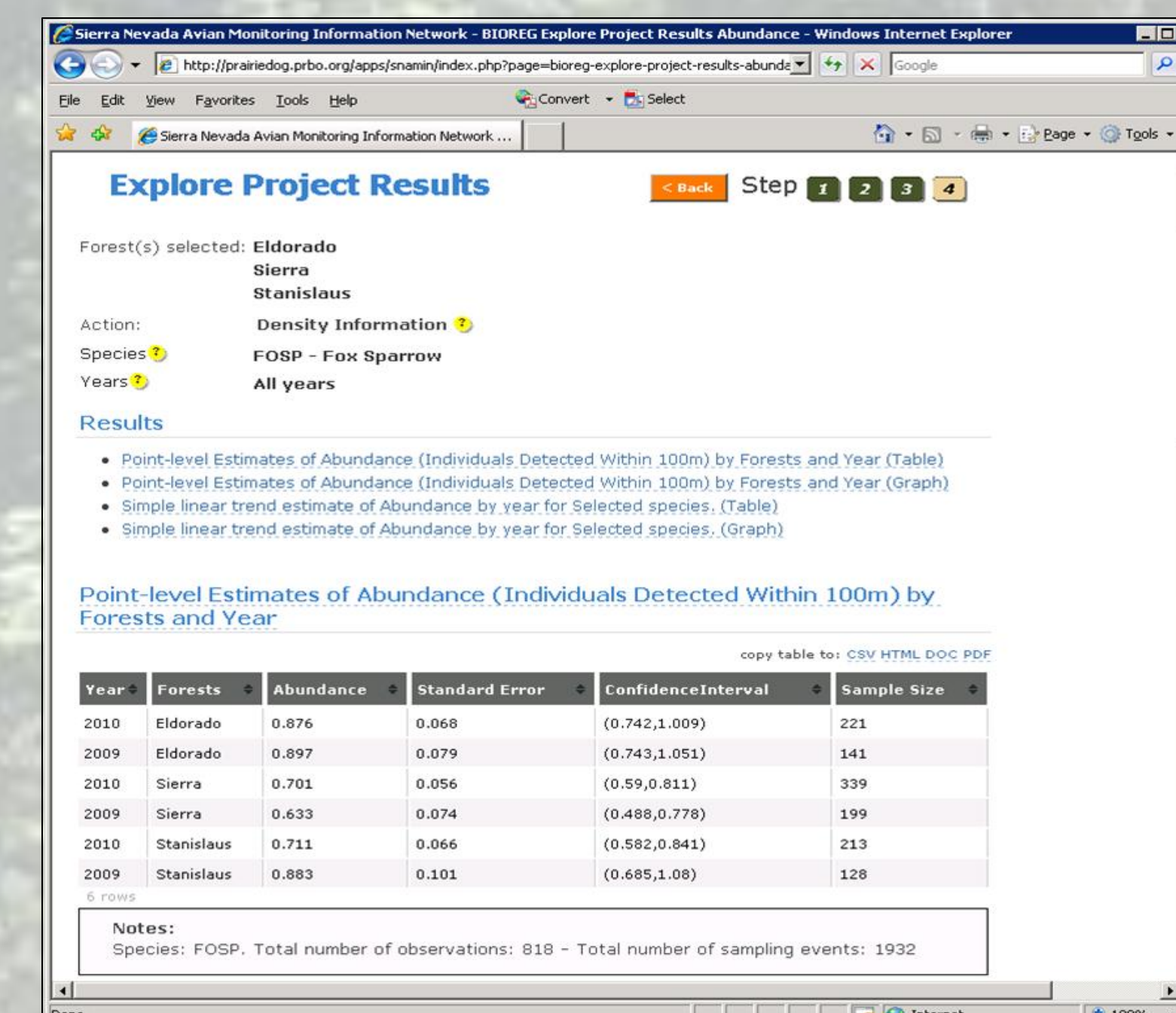
Years: 1997 – ongoing
samples: 344 points on 29 transects
Locations: Plumas and Lassen National Forests

Interactive Google Earth maps allow users to examine survey locations online with ability to view terrain, roads and other landmarks, single species presence/absence, habitat type, elevation, slope, aspect, and location information for each point.



Users can customize the output through a four-step process:

- Step 1 – select locations
- Step 2 – choose the type of analysis (effort summaries, density estimates, occupancy, species richness, or raw data downloads)
- Step 3 – choose species of interest
- Step 4 – examine outputs.



Acknowledgements – Funders include Region 5 of the USDA Forest Service, Resources Legacy Fund, Pacific Southwest Research Station, Lassen National Forest, and HFQLG Pilot Project. Many Sierra Nevada National Forest District Biologists and staff have assisted in field logistics and other tasks – we are very grateful for their efforts. The PRBO Informatics team including Leo Salas, Michael Fitzgibbon, Doug Moody, and Dennis Jongsomjit were integral in completing this work and in keeping the website functioning and enhancing capacity.

SNAMIN Webinar: Wednesday May 25, 2011 – 10:00AM (PST)

- PRBO will host a webinar that describes the functionality of the Sierra Nevada Avian Monitoring Information Network website (<http://data.prbo.org/apps/snamin/>).
- We will host this webinar through GoToMeeting.com which requires that you install some free software.
- During the webinar we will highlight the main features of SNAMIN including: project background; downloading project reports and publications; using online maps; downloading raw data; and we will walk through the steps required to conduct an example analysis and produce output.
- If you are interested in attending, please email ljroberts@prbo.org and include “SNAMIN webinar” in the subject line. You will receive a reply with webinar login details.
- If you can not attend the webinar live, it will be recorded and available for download from the SNAMIN website!

